

Stanmer Estate Restoration Project Report

July/August 2013

Headline Findings

- 96% of respondents said they have visited Stanmer Park
- The most popular reasons for visiting are for 'enjoying nature/open space' (77%), 'walking/rambling' (68%), 'tea room' (60%), 'getting away from it all' (59%) and 'socialising with friends' (44%).
- The most popular areas within Stanmer for outdoor leisure activities are 'parkland and area around Stanmer House' (65%), 'great wood' (62%), and the 'area around the village & church' (58%).
- 25% of respondents use Stanmer Park at least once a week, and 57% of respondents use it at least Monthly.
- Respondents most often stay for 1-2 hours (44%), but a significant number stay for half a day (37%).
- Respondents most often travel to Stanmer by car as a driver (59%) or passenger (27%), with approximately a quarter regularly using bus (24%).
- 89% of respondents find it easy to get around Stanmer.
- 31% of respondents are happy with current parking arrangements. The most common complaints are: 'surfacing and bays need improving' (27%), 'not enough parking for cars' (23%) and 'not enough parking for cycles' (11%).
- The most popular additional facilities requested were 'toilet facilities elsewhere on the estate' (46%), 'more opportunities to ... learn about nature, wildlife or local food' (39%), 'heritage and/or information centre' (34%), 'more bins' (33%) and 'refreshment facilities elsewhere on the estate' (26%).

Background

Stanmer Estate is a much loved public park and a nationally significant eighteenth century Grade II landscape. It also forms the setting for the Grade I listed Stanmer House, Grade II* Stable Block and 16 Grade II listed buildings.

Situated in the South Downs National Park, Stanmer Estate's beautiful woodland walks and extensive open lands provides an important area for residents across the city and visitors, with many using it for walking, enjoying

nature, sports and other leisure activities and as a gateway to the wider South Downs National Park.

Stanmer Estate is also a working landscape, with farming, grazing and food growing taking place on its land and it is home to many residents in Stanmer Village and cottages around the estate.

Brighton & Hove City Council (BHCC) consulted on the development of a long term Master Plan for Stanmer estate with the aim of restoring and protecting its historic buildings and landscape.

Methodology

6000 households were sent a questionnaire in June 2013.

NEED METHODOLOGY OF MAILOUT

The consultation was also advertised on BHCC's website with a link to the council's Consultation Portal where an online version of the questionnaire could be completed.

Official public exhibitions were held on the following dates and locations:

2 June	Sussex Festival of Nature
15 June	Peoples Day
4 June	Jubilee Library
18 June	Stanmer House

Additionally questionnaires were available to the public at Jubilee Library, Brighton Town Hall, Hove Town Hall, Stanmer Nursery, Stanmer House and Stanmer Tea Room throughout the consultation and also on Stanmer Organics Open Day (21st July).

The public consultation ran from 1 June to 30 July.

1504 valid responses were received. 834 (55%) were paper copy questionnaires and 670 (45%) were on-line responses. A further breakdown reveals the sources of paper questionnaires.

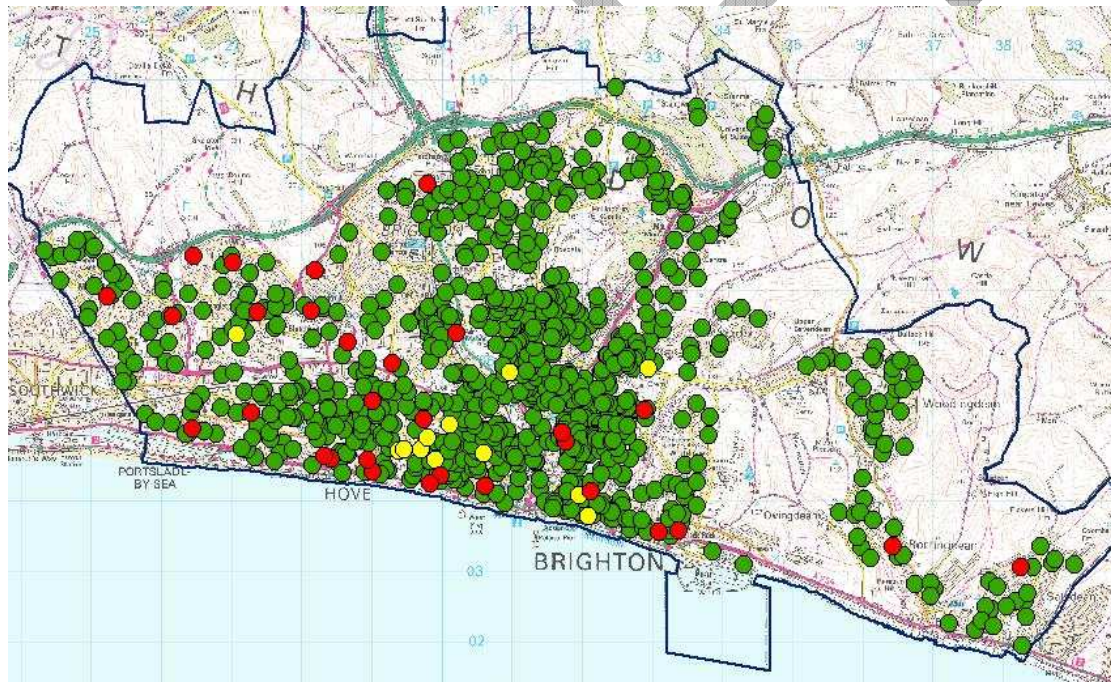
Event	No. of Responses
Peoples day (15 June)	44
Jubilee Library (4 June)	91
Stanmer House(18 June)	1
Unstaffed @ Jubilee Library	1
Unstaffed @ Stanmer House	66
Unstaffed @ Stanmer Tea Room	22
Stanmer Organics Open Day	33
Mailout to residents	471
Event unknown	60
Coldean	2
Tea Rooms	9
Snapshot - Lower Lodges	7
Snapshot - Upper Lodges	1
Snapshot - Chalky	2
Snapshot - Stanmer Bookshop	5
Stanmer Preservation Society	19
Total	834

Full Results

Q2: Have you visited Stanmer Park / Estate?

	No. of Responses	% of Respondents
Yes	1444	96%
No	57	4%
No Answer	3	<1%
Total	1504	-

The map below show the questionnaires' origins, with each dot representing a postcode. Green dots represent those who had visited Stanmer Park, whilst red dots represent those who hadn't. Yellow dots represent when multiple questionnaires came from the same postcode, with different responses (to Q2).



Q2i: If no, please tell us why:

Respondents who had not visited Stanmer Park were then invited to list reasons why they hadn't visited in a comment box. These comments are displayed in full in Appendix A. Additionally, for the paper based questionnaires, comments were coded with the most frequent comments being represented below:

Comment	Number
Don't know much about surrounding area / not heard of it	20
Too far away / go elsewhere / transport issues	12
Intend to visit / no time / never thought to go	10
Don't know how to get there / need information	5
Bad website	1

Q2ii: If no, what would encourage you to visit:

Respondents who had not visited Stanmer Park were then invited to list what would encourage them to visit in a comment box. These comments are displayed in full in Appendix A. Additionally, for the paper based questionnaires, comments were coded with the most frequent comments being represented below:

Comment	Number
Need more advertisement/information on it / free open day / newsletter / website / publicise events	22
Need more bus routes / shuttle / Volks railway / free bus / encourage use of public transport / up to Stanmer House Park and ride at entrance / bus stop closer to park entrance	5
More disabled access / parking / disabled buggies	5
This questionnaire encourages visit	4
Don't know how to get there / need information	3

Q3: What are your main reasons for visiting? (tick one or more boxes)

Reason for visiting	No. of Responses	% of Respondents
<i>Living, Working & Volunteering</i>		
Visiting an organisation, office or depot based there	238	16%
Volunteering	159	11%
Visiting someone who lives or works there	97	6%
Leading an organised activity, eg Nordic Walking	75	5%
Organisation, office or depot is based there	56	4%
Work on the estate	37	2%
Live on the estate	21	1%
Running a business, eg Professional Dog Walking	17	1%
<i>Visiting Local Attractions</i>		
Tea Room	903	60%
Stanmer House (or holding an event there)	604	40%
Brighton & Hove Nursery (for plant sales)	566	38%
Stanmer Church	444	30%
The Earth Ship	414	28%
Stanmer Organics	359	24%
Rural Museum	357	24%
The Orchard	313	21%
Stanmer Preservation Society Book Stall	165	11%
Care Co Op Farm	153	10%
Community Compost Project	128	9%
<i>Outdoor Leisure Activities</i>		
Enjoying nature / open space	1163	77%
Walking / rambling	1022	68%
Getting away from it all	888	59%
Socialising with friends	659	44%
Having picnics	640	43%
Attending events	559	37%
Access to/from the South Downs National Park	455	30%
Playing / exploring	419	28%
Dog walking	408	27%
Attending organised activities	318	21%
Cycling	297	20%
Informal leisure e.g. Frisbee	257	17%
Jogging / running / exercise	209	14%
Through route (pedestrian)	170	11%
Extreme cycling (off road)	166	11%
Through route (cyclist)	140	9%
Playing organised sports	30	2%

Participants who listed 'volunteering', 'leading an organised activity' or 'running a business' were given the opportunity to write what type of activity

they were doing, which are listed in full in Appendix A. In addition respondents were given the option of listing alternative activities, which are also listed in Appendix A.

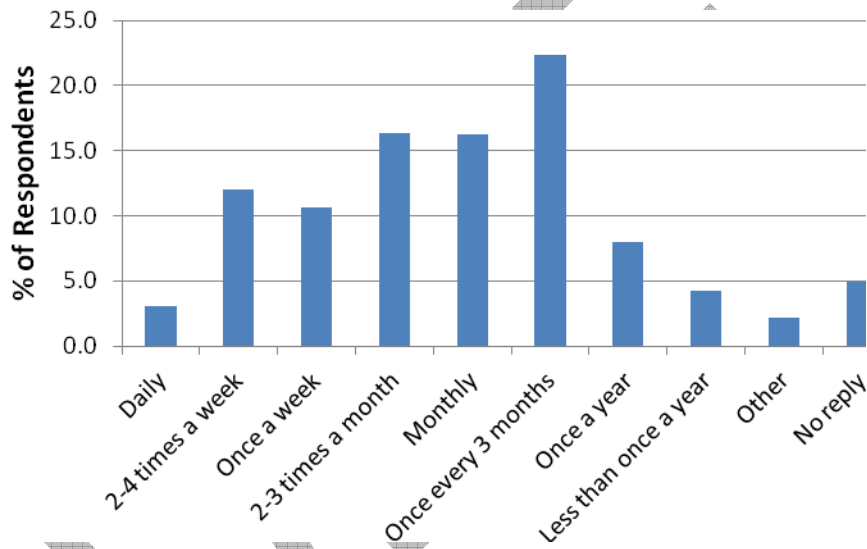
Q3i: If you use Stanmer Estate for Outdoor Leisure Activities, please tell us where these activities take place (tick one or more boxes).

	No. of Responses	% of Respondents
Area around the Village & Church	875	58%
Parkland and area around Stanmer House	985	65%
Farmland	400	27%
Great Wood	928	62%
Chalk Ridge Woodlands	547	36%
Coldean Wood	389	26%
Sports Pitches	121	8%
Byways and bridleways around the site	617	41%
Area around the Nurseries and Orchards	564	38%
Other	84	6%

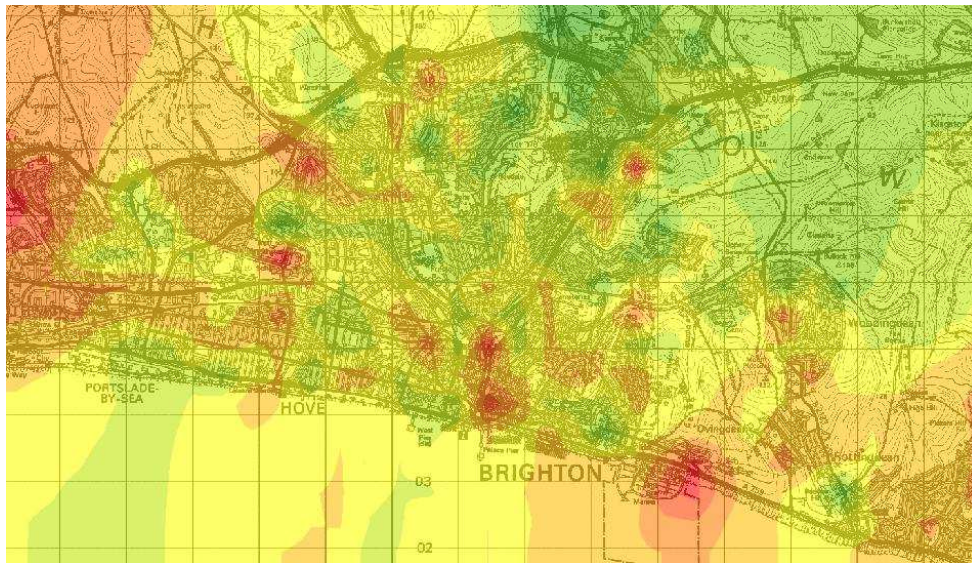
Participants were given the opportunity to list other areas where they used Stanmer Estate for outdoor leisure activities; these are listed in Appendix A.

Q4: On average, how often do you use Stanmer Park/ Estate? (tick one box)

	No. of Responses	% of Respondents
Daily	46	3%
2-4 times a week	181	12%
Once a week	160	10%
2-3 times a month	246	16%
Monthly	245	16%
Once every 3 months	336	22%
Once a year	120	8%
Less than once a year	64	4%
Other	32	2%
No reply	74	4%
Total	1504	

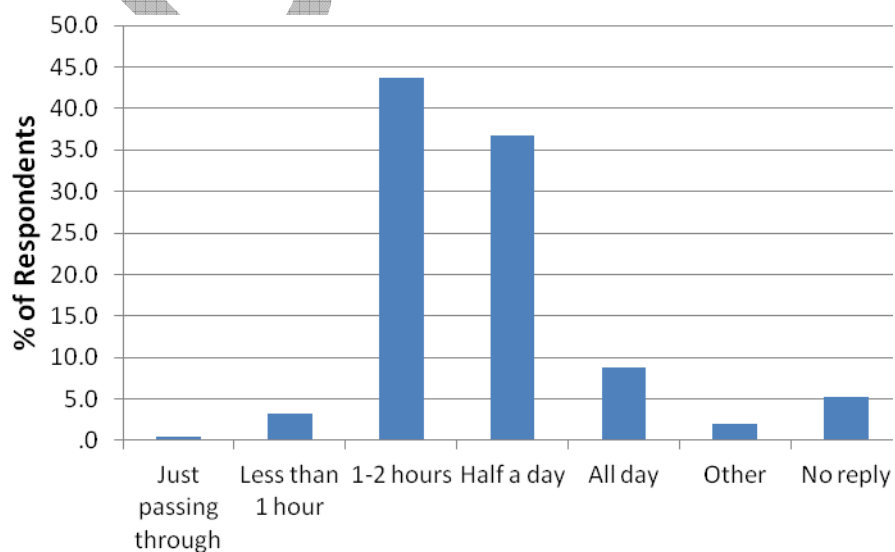


On the heat map below green represents a high frequency of visiting Stanmer Park, and red represents a low frequency:



Q5: On average, how long do you spend at Stanmer Park/ Estate (tick one box)

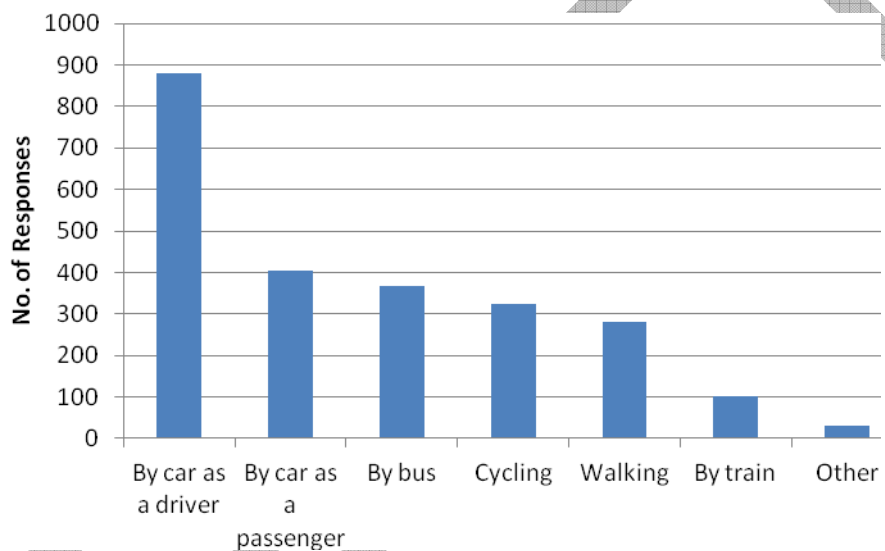
	No. of Responses	% of Respondents
Just passing through	6	<1%
Less than 1 hour	48	3%
1-2 hours	656	44%
Half a day	552	37%
All day	133	9%
Other	29	2%
No reply	80	5%
Total	1504	



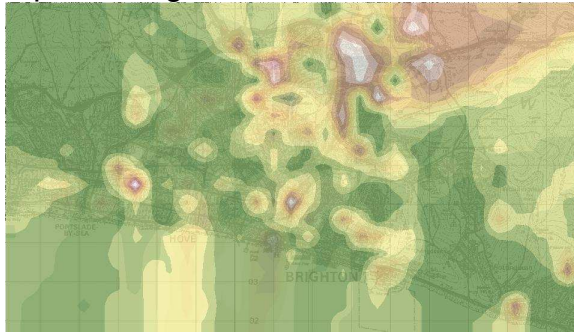
Q6: How do you usually travel to Stanmer? (please tick one or more boxes)

	No. of Responses	% of Respondents
By car as a driver	880	59%
By car as a passenger	405	27%
By bus	366	24%
By train	102	7%
Cycling	324	22%
Walking	282	19%
Other	32	2%

Participants were given the opportunity to list other modes of transport, these are listed in Appendix A.



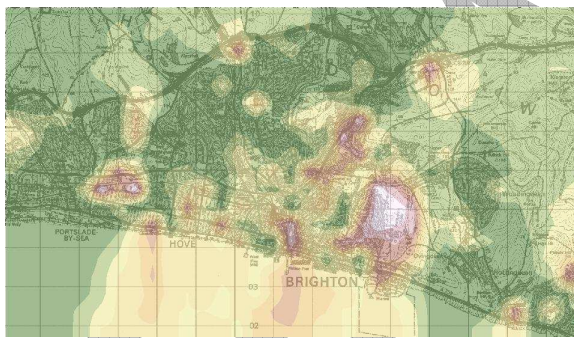
The heat maps below demonstrate travel mode preferences for various modalities, with red/white representing much use of the modality, and green representing less use.



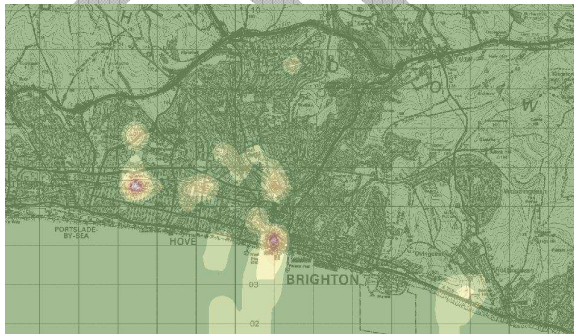
Walking



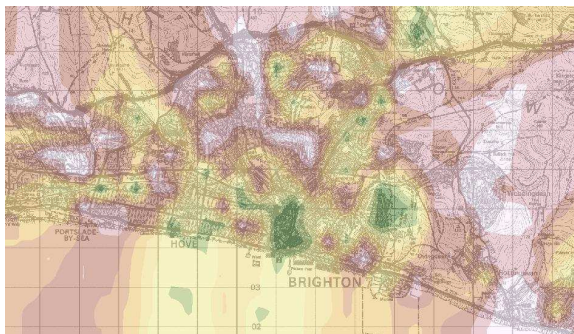
Cycling



Bus



Train



Car

Q7: What if anything, would have made your journey to Stanmer easier?

Respondents were invited to leave comments for this question. For the paper questionnaires, the comments were coded into common subjects and the top five comments made are presented below:

Comment	Number
Need more bus routes / shuttle / Volks railway / free bus / encourage use of public transport / up to Stanmer House Park and ride at entrance / bus stop closer to park entrance	95
Need more parking generally / near entrance / on grass / hidden / near church / in front of Stanmer House / for Nursery / Ditchling Road by High Park Farm / Lower Lodges / Upper Lodges / bottom car park bigger / parking difficult / hard to find place / queues / hard when events on / The Orchard / Coldean side of road with footbridge	33
Need better signposts / accessibility / notice on main road stating if parking restrictions	24
Roadworks complaint / narrow roads / bus lane restricts traffic / entrance can become blocked / poor road junctions / queues for parking cause congestion / less congestion on Ditchling Road junction	19
Need more cycling facilities / paths / rental bikes	17

Q8: Do you find it easy to get around Stanmer?

	No. of Responses	% of Respondents
Yes	1336	89%
No	86	6%
No reply	82	5%
Total	1504	

Respondents were invited to leave comments for this question to explain why they didn't find it easy. For the paper questionnaires, the comments were coded into common subjects and the top five comments made are presented below:

Comment	Number
Can't find way around / need maps/guides / poor signage / walk markers / info boards about flora & fauna / info centre / nature trail	17
Lack of maintained paths / better surface for wheelchairs/buggies / let grass grow with mown paths	7
Roadworks complaint / narrow roads / bus lane restricts traffic / entrance can become blocked / poor road junctions / queues for parking cause congestion / less congestion on Ditchling Road junction	4
Need more bus routes / shuttle / Volks railway / free bus / encourage use of public transport / up to Stanmer House Park and ride at entrance / bus stop closer to park entrance	4
Need more parking generally / near entrance / on grass / hidden / near church / in front of Stanmer House / for Nursery / Ditchling Road by High Park Farm / Lower Lodges / Upper Lodges / bottom car park bigger / parking difficult / hard to find place / queues / hard when events on / The Orchard / Coldean side of road with footbridge	4

Q9: What, if anything would help you to get around Stanmer more easily?

Respondents were invited to leave comments for this question. For the paper questionnaires, the comments were coded into common subjects and the top five comments made are presented below:

Comment	Number
Can't find way around / need maps/guides / poor signage / walk markers / info boards about flora & fauna / info centre / nature trail	60
Need more bus routes / shuttle / Volks railway / free bus / encourage use of public transport / up to Stanmer House Park and ride at entrance / bus stop closer to park entrance	21
Lack of maintained paths / better surface for wheelchairs/buggies / let grass grow with mown paths	19
Need more parking generally / near entrance / on grass / hidden / near church / in front of Stanmer House / for Nursery / Ditchling Road by High Park Farm / Lower Lodges / Upper Lodges / bottom car park bigger / parking difficult / hard to find place / queues / hard when events on / The Orchard / Coldean side of road with footbridge	10
More disabled access / parking / disabled buggies	9

Q10: We would like to understand what, if any, issues you have with the current parking arrangements. (tick one or more boxes)

	No. of Responses	% of Respondents
Happy with parking arrangements	463	31%
Surfacing and bays need improving	404	27%
Not enough parking for cars	343	23%
Not enough parking for cycles	158	11%
Not enough disabled parking bays	78	5%
Current parking blocks access for others	112	7%
Current parking spoils look and feel of the landscape	143	10%
Parking is provided in the wrong places	73	5%
Parking is also required in other places	153	10%
Don't have a view	201	13%
Other	63	4%

Respondents were invited to leave further comments for this question. For the paper questionnaires, the comments were coded into common subjects and the top five comments made are presented below:

Comment	Number
Need more parking generally / near entrance / on grass / hidden / near church / in front of Stanmer House / for Nursery / Ditchling Road by High Park Farm / Lower Lodges / Upper Lodges / bottom car park bigger / parking difficult / hard to find place / queues / hard when events on / The Orchard / Coldean side of road with footbridge	69
Parking occupied by travellers / students / workers / caravans	27
Car parks/roads need resurfacing/maintenance / tight to get in / narrow entrances / can be muddy	24
Need more bus routes / shuttle / Volks railway / free bus / encourage use of public transport / up to Stanmer House Park and ride at entrance / bus stop closer to park entrance	15

Q11: Tell us what you like most about Stanmer.

Respondents were invited to leave comments for this question. For the paper questionnaires, the comments were coded into common subjects and the top five comments made are presented below:

Comment	Number
Like open space/size/green/free / good for walkers/picnics/children / close to Brighton	361
Like untouchedness/beauty/wildlife/pond/views/countryside/escape	340
Like Stanmer House/other facilities/café/village/activities/history/rural museum/farm/restaurant/ council plant section/nursery/earth ship/well	176
Like forest/trees/orchards	155
Like its diversity / variety / everything / something for everyone	62

Q12: Tell us what you like least about Stanmer Park

Respondents were invited to leave comments for this question. For the paper questionnaires, the comments were coded into common subjects and the top five comments made are presented below:

Comment	Number
Dog fouling / need more dog poo bins / fine dog owners / dog free area / dog walkers with too many dogs / dog bags left / dog bags in trees	93
Concerned about travellers / campers	81
Litter / fly-tipping / fines / signs saying please take litter home / more bins / in woods / ensure event organisers clean up after	57
Need more parking generally / near entrance / on grass / hidden / near church / in front of Stanmer House / for Nursery / Ditchling Road by High Park Farm / Lower Lodges / Upper Lodges / bottom car park bigger / parking difficult / hard to find place / queues / hard when events on / The Orchard / Coldean side of road with footbridge	56
Too many cars/traffic/noise/parked/congestion / driving too fast / noise from motorway	47

Q13: What additional facilities, if any, would you like to see at Stanmer? (tick one or more boxes if applicable)

	No. of Responses	% of Respondents
Refreshment facilities elsewhere on the estate	384	26%
Toilet facilities elsewhere on the estate	689	46%
Activity / Ranger Stations	282	19%
Heritage and/or Information Centre	511	34%
Community and/or Exhibition Space	306	20%
More information and/or interpretation signage around the estate	361	24%
More opportunities to get involved in learning about nature, wildlife or local food	588	39%
Sports pitches	41	3%
Sports pavilions and/or changing rooms	44	3%

Picnic areas	321	21%
More seating	364	24%
More bins	502	33%
Other	121	8%

Respondents who requested sports pitches or pavilions were invited to specify for which sport, these are listed in Appendix A.

Q14: Please tell us what, if anything else, would make Stanmer more welcoming, help you enjoy your visit more or encourage you to come more often?

Respondents were invited to leave comments for this question. For the paper questionnaires, the comments were coded into common subjects and the top five comments made are presented below:

Comment	Number
Want more events eg arts / wildlife / concerts / free / conservation/orienteering/fitness courses / organised walks / foraging days / art exhibitions / open air amphitheatre/performance/concerts / bike rides / re-enactments / big screen open air cinema / frisbee/football tournaments / fairs / cross-country running / more like kite festival	50
Can't find way around / need maps/guides / poor signage / walk markers / info boards about flora & fauna / info centre / nature trail	46
Don't modernise / keep traditional / no more signs / not too organised/commercial / protect it / not too many signs / less barbed wire & fences	43
Want play area for children / petting area / more for babies / play bus days / children's fitness trail	40
Need more bus routes / shuttle / Volks railway / free bus / encourage use of public transport / up to Stanmer House Park and ride at entrance / bus stop closer to park entrance	35

Q15: If you have anything else that you wish to tell us about Stanmer, please use this space.

Respondents were invited to leave comments for this question. For the paper questionnaires, the comments were coded into common subjects and the top five comments made are presented below:

Comment	Number
Don't modernise / keep traditional / no more signs / not too organised/commercial / protect it / not too many signs / less barbed wire & fences	58
Dilapidated farm/historical buildings / needs a bit of maintenance around park/farm shop/orangery	12
Need more advertisement/information on it / free open day / newsletter / website / publicise events	9
Like untouchedness/beauty/wildlife/pond/views/countryside/escape	7
Can't find way around / need maps/guides / poor signage / walk markers / info boards about flora & fauna / info centre / nature trail	6

Demographics

Age:

Age	No. of Responses	% of Respondents
Under 18	2	<1%
18 - 24	20	1%
25 - 34	108	7%
35 - 44	177	12%
45 - 54	157	10%
55 - 64	90	6%
65 - 74	41	3%
75+	6	<1%
No Answer	903	60%
Total	1504	

Gender:

Gender	No. of Responses	% of Respondents
Male	559	37%
Female	829	55%
Other	2	<1%
Prefer not to say	35	2%
No Answer	79	5%
Total	1504	

Gender ID same as birth:

Gender ID	No. of Responses	% of Respondents
Yes	537	36%
No	16	1%
Prefer not to say	43	3%
No Answer	908	60%
Total	1504	

Ethnicity:

Ethnicity	No. of Responses	% of Respondents
White	673	45%
English / Welsh / Scottish / Northern Irish / British	527	35%
Irish	67	5%
Gypsy or Irish Traveller	5	<1%
Sudanese	2	<1%
Any other White background	60	4%
Asian or Asian British	2	<1%
Bangladeshi	2	<1%
Indian	4	<1%
Chinese	3	<1%
Any other Asian Background	5	<1%
Black or Black British	3	<1%
Any other Black background	7	1%
Mixed	4	<1%
Asian & White	4	<1%
Black African & White	1	<1%
Black Caribbean & White	2	<1%
Any other ethnic group	1	<1%
Prefer not to say	47	3%
No Answer	85	6%
Total	1504	

Disability:

Disability	No. of Responses	% of Respondents
Yes a little	147	10%
Yes a lot	569	38%
No	536	36%
Prefer not to say	34	2%
No Answer	218	15%
Total	1504	

Religion:

Religion	No. of Responses	% of Respondents
I have no particular religion	649	43%
Buddhist	320	21%
Christian	102	7%
Hindu	5	<1%
Jain	3	<1%
Jewish	4	<1%
Muslim	24	2%
Pagan	26	2%
Agnostic	6	<1%
Atheist	88	6%
Other	20	1%
Other philosophical belief	40	3%
Prefer not to say	63	4%
No Answer	154	10%
Total	1504	

Sexuality:

Sexuality	No. of Responses	% of Respondents
Heterosexual / Straight	1074	71%
Lesbian / Gay woman	62	4%
Gay man	42	3%
Bisexual	27	2%
Other	14	1%
Prefer not to say	84	6%
No Answer	201	13%
Total	1504	

DRAFT

Appendix A – Uncoded comment boxes/suggestions

Q2i: If [never visited Stanmer Park] please tell us why?

Because I come from Czech Republic. I heard about the park and I would like to see it., Didn't know of it's existence, I didn't realise it is a place worth visiting., Live in London, Never had the opportunity but will create an opportunity my next annual leave., We have always wanted to visit, but there was no safe cycle route to the park last time we enquired.

Q2ii: If [never visited Stanmer Park]

(If) recommended by other mothers for being baby friendly, A safe, pleasant, cycle route to it., distance, Eco usage of estate, I enjoy woodlands, if the estate contained much more woodland and less boring grazing fields this would make it a much more interesting and diverse place. I would like to see the amount of tree coverage increased to encourage more animal habitats., If family were going, It would need to be free., Organised visits to the park, This park is socialized nature and it will be great to have there some sustainable stuff. Nature is sustainable by itself. Why not sustainable houses or something like that?

Q3: Volunteering Activities:

APPLE DAY HELPING, apple orchard nursery maintenance, Archaeological Excavation with BHAS, as RSPB volunteer attending to charity box in tea room, monitoring wildlife, assist breathing space, Assisting on Brighton Permaculture trust courses, picking and juicing apples, assisting rangers all year round, At Rural Museum, B Permaculture Trust, BPT (2), BPT Apple Day, stall at festival of nature, scrumping, Brighton earthship, Brighton perma culture, brighton permaculture, Brighton Permaculture, Brighton Permaculture Group activities, Brighton Permaculture Trust, Brighton Permaculture Trust - apple harvesting and Apple Day support, Brighton Permaculture Trust activities, Brighton Permaculture Trust courses and events, Brighton Permaculture Trust. Earth ship. community orchard, Building the Earthship, Building work at Earthship Brighton, Care co-op farm, Care coops Nourish Community Farm, Brighto Permaculture Trust, The Earthship, Apple Day, Community Farm, Community food growing, Conservation, coppicing, Coppicing in Great Wood, course aide at brighton earthship, courses at Brighton Permaculture Trust, Cross country running, cycle event, dog walking - Cinnamon Trust (2), dog walking business, earthship (2), EARTHSHIP, Earthship Build Course, earthship building/growing food on allotment, Earthship construction, Earthy Women and Kids, eco-building, Environmental conservation, environmental, educational, Festival of Nature, Food project, For several years I volunteered with the Rangers (SDJC), Forest School, Fork & Dig It, Fork & Dig It - Community organichorticulture project, Fork & Dig it: veg share, and the Brighton Permaculture plot & Apple Day, Fork & Dig It/ Plumpton cCollege, fork and dig it allotment, Fork it and dig it, Fruit Tree Growing, Garden Project ., gardening (3), Gardening (3), gardening at Physic garden, organic herb garden, stanmer organics, Gardening at Stanmer Organics, Gardening for community groups on Stanmer allotments, Gardening for Fork and Dig It, Gardening, pruning and apple juicing with Brighton Permaculture Trust, gardening, silviculture, Gardening, Volunteer rangers, Gardening/ eco-building, gardening/ permaculture and growing projects, generally helping out with Brighton Permaculture Trust, Growing projects, supporting permaculture courses., health walk leader, Health Walk Leader, Health walks, Healthwalks, Help out at Apple Day, helped build earthship, helping at Stanmer Organics, Helping at the Nature Festival, helping maintain the Earth Ship, orchards, veg plots., Helping on workshop at Eastship project (2), Helping out on courses and activities at Earthship Brighton, volunteering for Brighton Permaculture Trust in their orchards, Horticulture, Horticulture - propagating Sussex native trees & shrubs from seed, for conservation planting, horticulture and apiary, horticulture and working with Ranger, I volunteer for the permaculture trust, Looking, Managing the SPS book shop, Monitor sheep grazing, Museum, Museum/Dye Garden, on stanmer organic, Orchard, Orchard and allotment management, Orchard. Permaculture., Orchard/land work, Organic co-operative - volunteering with work, Organic Food Growing, Organic gardening, Organic, Sustainable Land use and building projects, otesha project helping at open day, permaculture (3), Permaculture (4), permaculture (bpt), plumpton, stanmer organics, fork and dig it, Permaculture harvest, Permaculture Trust - at the plot, Permaculture trust - working on allotment, permaculture, food growing, horticulture, PLANTING TREES, Primary school trips, pruning apple trees, Right to roam scheme, running workshops at stanmer organics open day, rural museum, rural museum SPS, SDNP rangers, SOWING, GROWING, HARVESTING PLANTS (LEARNING ABOUT KEEPING HEALTHY NATURALLY) AT THE PHYSIC GARDEN, STANMER ORGANICS, SPND Ranger, SPS, SPS Rural Museum, Stanmer Organics (2), Stanmer Organics and Brighton Permaculture Trust, Stanmer Preservation Society member contributed to Nature Trail project, Stanmer Preservation Society Rural Museum, storytelling for earthy women and kids, tree nursery, Trustee of a charity that uses the Earth Ship for meetings, various organisations at stanmer organics,

Various, through the Permaculture Trust, Vegetable share/volunteer grower at Fork and Dig It, Volunteer health walks leader for the past 5 years. I also volunteer occasionally at Stanmer Nursery and for the past 18 months I have been part of a City Rangers' volunteer team which has been engaged in coppicing, wall building, clearance at Stanmer, Volunteering for Brighton Permaculture Trust., volunteering with Brighton permaculture trust and the low carbon trust at Stanmer organics, Walks leader, Winter Lookering(?) (sheep), With work, Working with children

Q3: Leading an organised activity:

A 1/2 day visit as part of a Permaculture Design Course, based in mid-sussex, Athletics/cross country, B&H Festival, B&H local access forum member, bike ride, biking and dog walking, Brighton and Hove Archaeological Society, Brighton Beagle Walk, Brighton Horse Driving Trials, Parks & Recreation Dept BHCC, Brighton Permaculture Trust, Building poly-tunnel, Charity run for the benefit of Vulnerable Adults., Church picnics, Community Access trips for young people with special educational needs, for the College where I work, Community entertaining, courses at Brighton Permaculture Trust, Creative Arts meetups, Cricket team, Cycling, Dawn Chorus Walk, EARTHSHIP, Family Fun-Day, Forest School, Geography field trip, Green woodworking and eco building courses/talks, Health walk leader, Healthwalks, Hiking for young people, Horse Driving Trials and latterly dropping guests at Stanmer House by coach, I run creative nature activities & writing workshops, I take my beaver scout group there for walking, climbing, bug hunting and geo caching, Leading Healthwalks - Nordic and ordinary, mountain biking (2), Mountain biking, mountain biking and walking, Mountain Biking in the park and surrounding area, mountainbiking, Mountainbiking, Nordic walking, Nordic walking - BHCC Health walks leader, Nordic Walking Ramblers Walking and Health Walks, Offroad Cycling, Running, Running workshops for Wild Star Gathering last year, single parent families day out with Sussex wildlife trust, Spring Watch, storytelling, storytelling at Stanmer organics, Strolling, supported therapeutic gardening group, Tours of Brighton Earthship, Volunteer land based, Walk leader, Walking (7), Walking group, cycling group, Woodcraft courses

Q3: Running a business:

Brighton Permaculture Trust, Buses, dog walkers, dog walking, Earthy Women & Kids run workshops based Care Co-Ops Farm/Wild Garden, I run creative nature activities & writing workshops, mountainbike skills instruction, Stanmer House (2), Wildlife/environmental education

Q3: Other reasons to visit:

a good space for a lunchtime walk when working on UoS campus, A rural place to wonder about and imagine the history gone by, All schools relay races, Apiary, Apple day, Apple Day and Brighton Permaculture Trust, Apple Day, Spring Watch, attending a horticulture training course, Attending course at Plumpton college, Attending courses, Attending Orchard Day, Bat Day etc, Spring Watch, attending training in the Earth Ship, B&H Nature Day, BBQ, Because it's a beautiful place to be, Because it's beautiful, Bee Keepers Association, Bird and nature watching., bird watching, birthday parties, bluebells, geocaching, weddings, may day, tree and plant identification, Bluebell wood, Bluebell wood, woodland in general, Brighton Compost Centre, Brighton Kite Festival, Brighton Permaculture Trust courses and events, Brighton Permaculture Trust courses and Plumpton College, Bringing school children for exploring, Buying hedging from Special Branch, cAMPING, Camping temporary, Celebration lunch, Children's birthday parties (lots). To see cows, City college Brighton, Plumpton college, City College course. Brighton Festival outdoor theatre, close to where we live interested in archaeology of area, College course (horticulture) - former City College Site, Community events and visiting food projects, Community food projects open day / Apple day, conservation re for SPS on BHCC CAG, Course at 'Plumpton at Stanmer', courses, Courses with Plumpton College and Brighton Permaculture Trust, curiosity, Digging and field walking, and visiting friends who live in Stanmer, Dining at Stanmer House (3), Dining/lunching at Stanmer House, Drawing and Painting from landscape woods and downs, Earthship and sustainable living, Earthship sustained living course, easy place to visit with a baby, ecology studies., Education, Educational (2), Enjoying gardening, Events of "Earthy Women and Kids", ex PandG Apprentice 1968-1971 - love to see Nursery restored to 1970 standards, Excellent and reasonably priced cafe, Family birthday gatherings, Fantastic kite festival, Festival activity - Fixing Point, Filming, Food growing, for educational reasons, finding out more about Earth Ship, organics, foraging, Foraging, Forest School (2), foraging, nature walks, volunteering, Gathering dead branches for a project, Geocaching (2), Geographical field trip, prom, Going to Brighton Permaculture Trust events, Have food in cafe at village, Having cake and tea at the cafe., Health walk, Horse Driving Trials, Horse riding, horse riding, childrens party, may day celebration., horticulture course at the Stanmer training centre, i am disabled and love the country side when its not been spoild, I got married there in 1984, I have attended several of the excellent courses run by Brighton Permaculture Trust., I have been brought up near the park since a baby 1953 and brought my own children here., I just love it there., I just love Stanmer Park, I like the surrounding trees and shrubland habitats where wildlife can be watched

and enjoyed, I love it there!, I record species of spiders for the British Arachnological Society, I study at Stanmer Horticulture Centre, I study there at Plumpton College site, I was married at Stanmer Church in 1970 and now my daughter & I place flowers in the huge tree in the church yard since my husband died, I work at Sussex uni and have my lunch in Stanmer park in summer., I work for City Park so visit offices, workshop and dump, interesting tree plantings (cedars?) and sculptures (2), It's a beautiful park and the cafe is a great focus to head towards from elsewhere. It's often a stopping off point on mtb cycle rides falling in the middle of a route., It's an amazing place to be., It's next door to where I work (Sussex University), Just getting a local breath of fresh air in lovely surroundings, Just love it (2), Kindlings/Forest School, kite flying, Kite flying, large safe space, taught kids to ride their bikes there, Learning about the site and permaculture projects there., learning plant names., Live & work nearby, LOCAL HISTORY, Making a film, in a challenge, Making short amateur films, meditation, Midnight nature walk, Mountain Biking, Music festivals, My daughter brings me here for tea and a change of scene as I am disabled., Nature / Farm / Wildlife / Learning, non-built quiet space, Nostalgia- remember how it used to be, Occasionally on horseback, on doorstep of university, On official business regarding the Estate - and wild camping, One of my nearest parks, OPEN DAYS AND WORKSHOPS AT STANMER ORGANICS, ot's beautiful and close to home, Outdoor theatre production - it was excellent, permaculture courses, Permaculture tour, Permaculture Trust events eg Apple Day, Personal Development, photography, Photography (2), PHOTOGRAPHY, photography and conkering, photography, art., Photography, butterfly chasing, collecting conkers/pine cones, Photography, see wildlife, physic garden & fork and dig it, Planted a tree in 2000 in memory of my dad who worked for over 40 years. Also 2013, I planted a tree in memory of my mum., Play with kids, Playing and watching football, Playing ball with my grandsons occasionally, pleasant place to have lunch and walk when at work at university, Plumpton College Horticultural Course, Primarily to visit the Earthship and locality, Proud of Park -to show visitors., pure pleasure, Quiet meditation and solitude, Race for Life, Race for life, apple day, Fun in Action picnic, Raves, relative buried in church yard, Releasing wildlife (mostly birds), S P A C E, School trip, sentimental - family member buried in churchyard, others worked on estate, Slacklining (similar to tightrope walking between trees), Sledging (2), Sledging in snow, Stanmer House restaurant, Stanmer House Restaurant, stanmer nurseries (buying plants), stanmer organics, Stanmer organics open days, Stanmer organics workshops, Stanmer Park open day. Pub at Stanmer House. To get to B&H Albion ground?, Stanmer Pub, strawbale building course, Study at Plumpton College Stanmer facility, Studying at Plumpton College Stanmer Site, Studying hedgerow herbs, Studying horticulture at Plumpton at Stanmer, Supporting activities operating out of the Earthship, Sweat Lodge, take my lunch break (based on Sussex Campus), taking my students to experience the earthship, Taking people with learning disabilities to enjoy the park, nursery and cafe, Tea room / bus ride, the experiments such as the earth ship. it's incredibly hard to create spaces of this time, we're lucky to have them so close by in Brighton, The woodland, to eat, to eat roast dinner, to find out more about the earth ship, wander around a little, To get away from cars so please no additional car parking spaces to be allowed!, To remember spending time there with my relatives who have passed away, to show London based grandchild the cows/horses and puddles, to visit the wonderful community projects eg trees and food growing, University field trip, Venue for arts events, Visit my parents who live at Stanmer, visiting Earthship and sustainable food-producing projects which surround it., Visiting friends, Visiting the two trees we have had planted there., Visiting Travellers on-site is my job as a Health Visitor!, Volunteering, Coleege course City College Horticulture Course, walk through it on way to work, Watching Sunday League Football, watching wildlife, Water allotments., Wedding (2), Went to farm and pub, Wildlife surveys, scouts activities, Wildlife watching, Woodland playgroup (Wednesday am) near Stanmer Organics, Work at the university, nice place to go for lunch, working on the apple orchards and nursery

Q3i: Other locations where Outdoor Leisure Activities take place:

5 mile perimeter sponsored walk (for approx 12 years), All areas (2), Amenity Gardens: Lisa's Physic Garden Project, Care Co-ops community farm, Closed off area where the work area was - pub. Gate has my name on it., events - Brighton HDT etc, Everywhere, Football/cricket, High Park, Piddingworth, Main footpath around circumference of Stanmer Park, Museum, n/a - did not visit for leisure reasons, North of university, Only visited once, not regular user - Earthship Brighton, Open access areas, Past upper Lodges towards Beacon, Photography especially bluebells etc, Picnics around pond area, stanmer organics & physic garden, Stanmer rainwater catch, to visit family graves in churchyard, Upper & Lower Lodges, Upper Lodges, Upper Lodges and North from there, Visit earthship, Walk round everywhere, Wedding, Wedding House, Whole estate explored, Wild Garden part Care Co-Ops farm

Q6: How do you usually travel to Stanmer? (Other)

company van, Don't travel there, work in the university, Horse, Horse riding, roller skating, I have no ideq where it isa, Mini bus community bus, Motorbike, on horseback, running (2), Running (13), School minibus, School minibus with children, Taxi (2), University field trip mini bus, Work van, Would like to cycle if it was safe

Q13: Sports pitches type

5-a-side pitches, Basketball, bring cricket back to area in front of house, cricket, Cricket (9), Cricket and rounders. Maybe Stallball- Sussex origin, cricket at the house, Cricket in front of house, cricket on the main green in front of the house (2), Cricket pitch reinstated, cricket square outside stanmer house, football (2), Football, Football field, tennis courts, cricket ground, Football/Rugby, Netball (2), P'tanque/boules, rounders football cricket, RUGBY, Rugby/tennis, Slamball (basketball on trampolines), Tennis courts, Volleyball, Volleyball/basketball/croquet/tennis/five-a-side astrotrurf,

Q13: Sports pavillions type

All sports, As above, ball sports, Basketball - general female and male areas sufficient, cricket (4), Cricket (9), Cricket, football, rugby etc., Cross country running, Cycling (Mountain) (2), football, Football, Football to replace one destroyed by fire, Football/Rugby, football/volleyball, For all sports that take place on the football pitches - I don't use them but those people don't even have anywhere nearby to get a drink of water after the last pavilliion was burnt down., general, Improved, Just general changing/toilets, Mbk, mountain biking - currently have to change at the car park so maybe a small place in the car parks?!, Rugby, Rugby/tennis, running, football, cricket, swimming,

DRAFT